

CONSTRUCTION PLANS FOR
SHERIDAN COUNTY
BROOKS STREET GREENSPACE
SHERIDAN, WYOMING
MARCH 2023

PREPARED BY:



engineers • surveysors • planners • scientists
1470 Sugarland Drive, Suite 1, Sheridan, WY 82801
307.672.9310 www.m-m.net



CONSTRUCTION PLANS
MARCH 2023

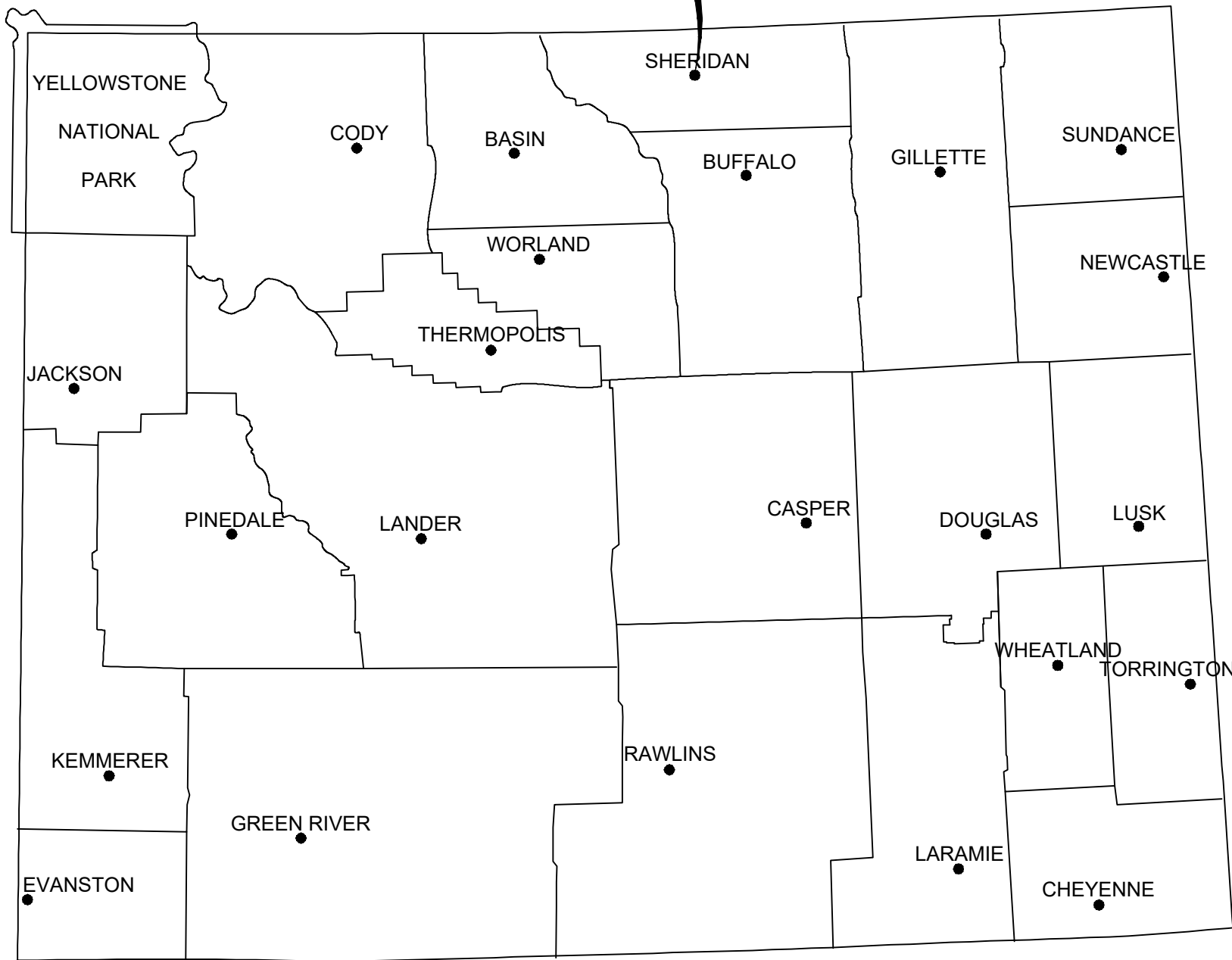
CIVIL DESIGN
MORRISON MAIERLE
TIM S. BRUGGER, P.E.
1470 SUGARLAND DR., SUITE 1
SHERIDAN, WYOMING 82801
PH: (307) 672-9310

ELECTRICAL DESIGN
MORRISON MAIERLE
JEFFREY KRAFT, P.E.
315 N. 25TH ST., SUITE 102
BILLINGS, MONTANA 59101
PH: (406) 656-6000

LANDSCAPE ARCHITECT
STEINER THUESEN PLLC
NATHAN STEINER, ASLA
1925 GRAND AVE., SUITE 105
BILLINGS, MONTANA 59102
PH: (406) 252-5545

MECHANICAL DESIGN
MORRISON MAIERLE
RYAN THOMSON, P.E.
315 N. 25TH ST., SUITE 102
BILLINGS, MONTANA 59101
PH: (406) 656-6000

PROJECT LOCATION



LOCATION MAP
NOT TO SCALE

PROJECT LOCATION



VICINITY MAP
NOT TO SCALE



Know what's below.
Call before you dig.

© This document was prepared by Morrison-Maierle and may contain confidential or privileged information. Morrison-Maierle, Inc. retains all common law, statutory, and reserved rights including the copyright thereto. Unauthorized use of this document or changes are strictly prohibited and may be unlawful.

VERIFY COLOR!
THIS SHEET IS INTENDED TO BE IN COLOR. RED, GREEN AND BLUE WILL BE VISIBLE IF REPRODUCED CORRECTLY.

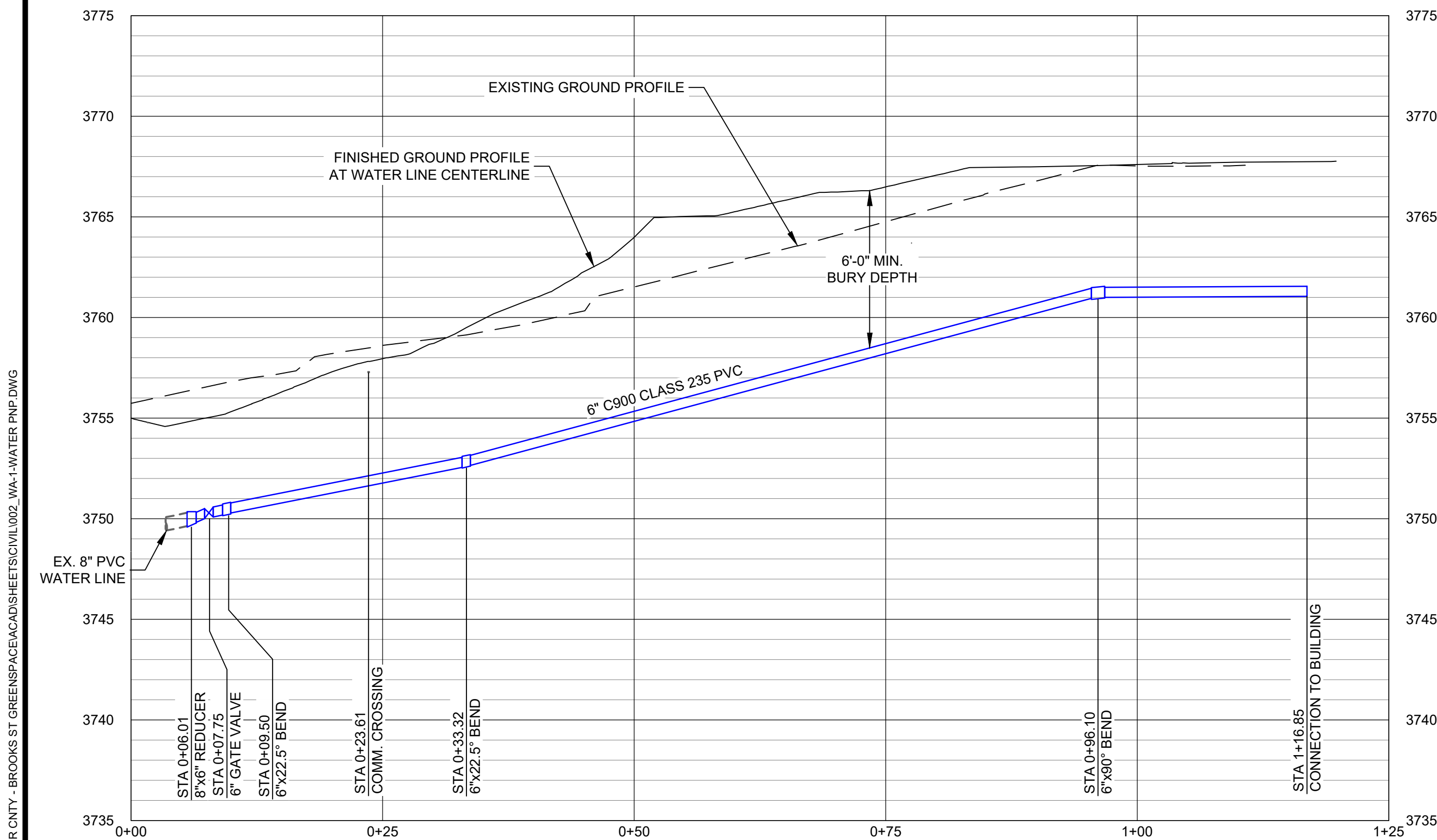
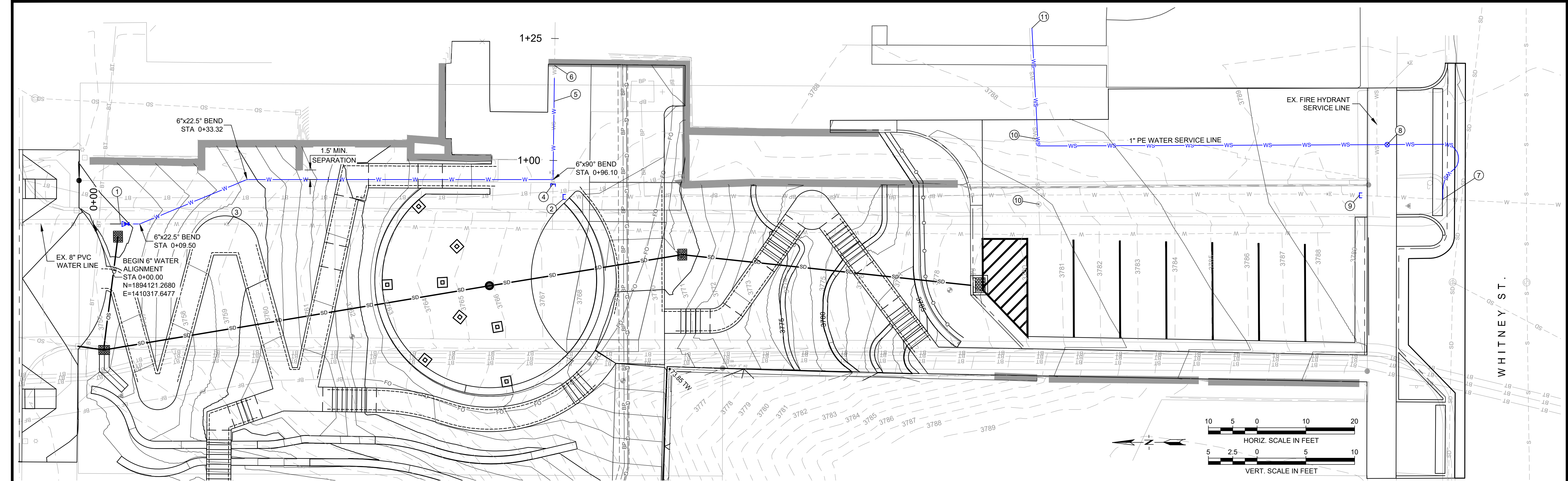


APPROVED BY:
TIM BRUGGER, P.E.
PROJECT MANAGER

 engineers • surveysors • planners • scientists	
QUALITY ASSURANCE	
TIM BRUGGER, P.E. PROJECT MANAGER	6/24/2022 Q.A. APPROVAL DATE
GERA FEIST OFFICE QUALITY ASSURANCE COORDINATOR	(001218) 22-20 Q.A. PROJECT NUMBER
JEFF FECK, P.E. PEER REVIEWER	

SET NO. _____
MORRISON-MAIERLE PROJECT NO. 6017.002

W:\8017 SHERIDAN COUNTY\8017.002 SHR CNTY - BROOKS ST GREENSPACE\AS\DWG\02 CIVIL\02 WA-1-WATER PNP.DWG
PLOTTED BY: TYSON MARKHAM ON Sep/08/2023



PROJECT NOTES

- ALL WATER LINE WORK SHALL BE INSTALLED IN ACCORDANCE WITH THE CITY OF SHERIDAN STANDARD SPECIFICATIONS AND DETAILS FOR STREET AND UTILITY CONSTRUCTION, CURRENT EDITION. NOTE THAT APPLICABLE DETAILS ARE NOT INCLUDED WITHIN THESE PLANS.
- CLAY TRENCH PLUGS SHALL BE INSTALLED FOR EACH WATER SERVICE CONNECTION TO THE BUILDING. TRENCH PLUGS SHALL EXTEND AT LEAST 5' OUT FROM THE FACE OF THE BUILDING EXTERIOR.
- SITE UTILITIES ARE SHOWN TO A DISTANCE OF 5' OUTSIDE THE BUILDING (UNLESS INDICATED OTHERWISE); CONTRACTOR SHALL TEMPORARILY CAP SERVICE LINES WITH PROVISIONS AS NECESSARY TO ALLOW FOR TESTING.
- PRESSURE TESTING OF FIRE SERVICE LINE SHALL BE CONDUCTED IN ACCORDANCE WITH NFPA 24 WITH THE REQUIRED FORMS AND DOCUMENTATION. THIS WILL REQUIRE A MINIMUM 200 PSI TEST PRESSURE.

FIRE SERVICE & DOMESTIC LINE (NORTH) KEY NOTES

- CONNECT TO EX. 8" PVC WATER LINE WITH NEW 8"x6" REDUCER AND 6" GATE VALVE.
- CAP AND ABANDON EXISTING 6" PVC WATER LINE FROM LOCATION SHOWN.
- REMOVE EX. WATER VALVE AND BOX (FOLLOWING NEW SERVICE LINE ACTIVATION); CAP AND PLUG OPEN PIPE ENDS
- CAP AND ABANDON EX. 6" CI WATER SERVICE LINE FROM LOCATION SHOWN.
- REMOVE AND REPLACE EX. 6" WATER SERVICE LINE
- CONNECT TO EX. 6" WATER SERVICE LINE AT BUILDING

DOMESTIC WATER SERVICE LINE (SOUTH) KEY NOTES

- 1" WATER SERVICE TAP ON EX. 6" CIP WATER LINE
- PROVIDE CURB STOP WITH WATER VALVE BOX ENCASEMENT IN PROPOSED SIDEWALK
- CAP AND ABANDON EX. 6" CIP WATER SERVICE LINE AT LOCATION SHOWN (FOLLOWING NEW NORTH SERVICE LINE ACTIVATION)
- REMOVE EX. CURB STOP VALVE
- CONNECT TO EX. WATER SERVICE LINE INSIDE OF BUILDING

INSTALLATION AND TESTING SEQUENCE

- 3 VALVES IN THE BURKITT/BROOKS INTERSECTION AND THE EXISTING VALVE JUST UP THE HILL CAN BE CLOSED SIMULTANEOUSLY WITHOUT AFFECTING ANY WATER USERS OR FIRE HYDRANTS, INCLUDING THE COURTHOUSE (PER CITY MAPPING).
- WHILE THE 4 VALVES ARE CLOSED, CUT THE EXISTING 8" PVC LINE TO TIE IN THE NEW SERVICE LINE. A CAP WILL BE INSTALLED ON THE EXISTING LINE THAT WILL BE ABANDONED.
- AS SOON AS THE NEW SERVICE LINE IS LAID UP THE HILL AND THRUST BLOCKS ARE IN PLACE WITH ADEQUATE CURE TIME, THE 3 VALVES IN BURKITT/BROOKS INTERSECTION CAN BE TURNED BACK ON.
- THE SOUTH VALVE UP THE HILL WILL REMAIN CLOSED.
- THE NEW SERVICE LINE WILL BE LAID UP TO A POINT JUST BEFORE REACHING THE EXISTING SERVICE LINE THAT FEEDS THE BUILDING (STA 0+96). CONTRACTOR WILL INSTALL TEMPORARY PIPING AND THRUST BLOCKING AT THIS LOCATION TO CONDUCT DISINFECTION, PRESSURE, AND FLOW TESTS TO MEET PLUMBING CODE REQUIREMENTS FOR TESTING OF A FIRE SERVICE LINE.
- ONCE THE LINE IS FULLY TESTED AND LAB RESULTS ARE RETURNED, CONTRACTOR SHALL SCHEDULE THE BUILDING TIE-IN. THIS IS TO BE COMPLETED ON A WEEKDAY EVENING, BEGINNING AT 5 P.M.
- THIS TIE-IN WILL REQUIRE A TOTAL WATER SHUTDOWN TO THE COURTHOUSE.
- THE TEMPORARY FLUSHING APPARATUS IS REMOVED, A SHORT LENGTH OF 6" PVC LINE INSTALLED, THEN A 90° BEND AND PIPE TO REACH THE BUILDING. A SOLID SLEEVE WILL BE INSTALLED AT THE CONNECTION TO THE EXISTING 6" (ASSUMED BE DUCTILE IRON PIPE) JUST OUTSIDE THE BUILDING.
- ALL PIPE AND FITTINGS INSTALLED DURING THE EVENING TIE-IN SHALL BE HEAVILY SWABBED WITH A CHLORINE SOLUTION FOR DISINFECTION, AND THE CONTRACTOR WILL ENSURE CLEAN WORK PRACTICES TO AVOID ANY DIRT OR OTHER DEBRIS IN THE LINES.
- ONCE ALL CONNECTIONS ARE MADE, WATER WILL BE TURNED ON (FROM THE NEW VALVE SOUTH OF BURKITT).
- WATER WILL NEED TO BE RUN WITHIN THE BUILDING TO FLUSH THE NEW PIPING.

6" WATER ALIGNMENT LAYOUT (FOR REFERENCE)

BEGIN 6 IN WATER
N 1,894,121.27 E 1,410,317.65 0+00.00

LINE (1)
S0° 13' 16.8215"W; 9.50'
N 1,894,111.76 E 1,410,317.61 0+09.50
LINE (1)

LINE (2)
S22° 16' 43.1785"E; 23.82'
N 1,894,089.73 E 1,410,326.64 0+33.32
LINE (2)

LINE (3)
S0° 13' 16.8215"W; 62.78'
N 1,894,026.95 E 1,410,326.40 0+96.10
LINE (3)

LINE (4)
S88° 59' 16.1850"E; 28.90'
N 1,894,026.44 E 1,410,355.30 1+25.00
LINE (4)

N 1,894,026.44 E 1,410,355.30 1+25.00
END 6 IN WATER

CONSTRUCTION PLANS

MARCH 2023

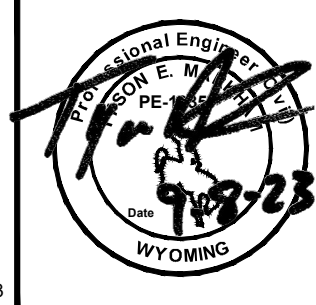
PROJECT NUMBER
6017.002

SHEET NUMBER

DRAWING NUMBER

WA-1

**Morrison
Maierle**
engineers • surveyors • planners • scientists
1470 Sugarland Drive, Suite 1, Sheridan, WY 82801
307.672.3310 • www.m-m.net
COPYRIGHT © MORRISON-MAIERLE, 2023



DRAWN BY: KRL
DSGN. BY: TSB
APPR. BY: TSB
DATE: 3/1/2023
Q.C. REVIEW
BY: JMF
DATE: 6/24/2022

SHERIDAN

SHERIDAN COUNTY
BROOKS STREET GREENSPACE

WYOMING

WATER LINE PLAN AND PROFILE