

Daily Report

Tuesday, Aug 27, 2024

Sheridan County Brooks Street Greenspace

224 South Main Street
Sheridan, WY 82801
Job# : 6017.002.00

LANDSCAPE IMPROVEMENTS

11:02 AM Tre LaBossiere
[Lat/Long: 44.795153,-106.957145]

Arrived on site at 11:00 for the weekly construction meeting. There was no work happening on site.

Tre LaBossiere:



Daily Report

Wednesday, Aug 28, 2024

Sheridan County Brooks Street Greenspace

224 South Main Street
Sheridan, WY 82801
Job# : 6017.002.00

MECHANICAL IMPROVEMENTS

10:03 AM **Tre LaBossiere**
[Lat/Long: 44.795232,-106.957626]

Arrived on site at 9:30. Northern Underground was on site as well as Weston, mechanical, Highland Incorporated, and Stonemill construction.

Highland was working on placing the lime stone rock mulch around all of the plantings in the northern area of the site. There were no issues with their process for replacing the rock. They had a stockpile of rock in the parking lot and were transporting rock from the pile into wheelbarrels and wheeling it up the sidewalk.

Weston mechanical was placing foam board under the seating area proposed concrete pour, and some of the sidewalk where Stonemill had ended earlier poor. Weston was placing a single layer of foam board and taping down the joints. They had stopped placing foam board shortly after I arrived on site due to the high wind.

Stonemill was on site placing forms for some concrete sidewalk on the job. They were also discussing the concrete to be poured under the pergola and around wall number five. The concern was due to the fact that wall number five is a About 3/4 of a circle the Stonemill foreman was discussing means and methods as to how to pour the concrete, place, and joint. I told them that the maximum panel would be about 7 1/2 feet given the standard rule of using one and a half times the thickness of the concrete. The Stonemill Foreman said that they would shoot for 6 foot wide max and then some instances seven if it made sense but would try to stay well under the 7 foot panel sizing.

There were no issues with the work that I witnessed on site.





LANDSCAPE IMPROVEMENTS

10:03 AM **Tre LaBossiere**
 [Lat/Long: 44.795232,-106.957626]

Arrived on site at 9:30. Northern Underground was on site as well as Weston, mechanical, Highland Incorporated, and Stonemill construction. Highland was working on placing the lime stone rock mulch around all of the plantings in the northern area of the site. There were no issues with their process for replacing the rock. They had a stockpile of rock in the parking lot and were transporting rock from the pile into wheelbarrels and wheeling it up the sidewalk.

Weston mechanical was placing foam board under the seating area proposed concrete pour, and some of the sidewalk where Stonemill had ended earlier pour. Weston was placing a single layer of foam board and taping down the joints. They had stopped placing foam board shortly after I arrived on site due to the high wind.

Stonemill was on site placing forms for some concrete sidewalk on the job. They were also discussing the concrete to be poured under the pergola and around wall number five. The concern was due to the fact that wall number five is a About 3/4 of a circle the Stonemill foreman was discussing means and methods as to how to pour the concrete, place, and joint. I told them that the maximum panel would be about 7 1/2 feet given the standard rule of using one and a half times the thickness of the concrete. The Stonemill Foreman said that they would shoot for 6 foot wide max and then some instances seven if it made sense but would try to stay well under the 7 foot panel sizing.

There were no issues with the work that I witnessed on site.





CONCRETE SIDEWALK/CONCRETE STAIRS

10:03 AM **Tre LaBossiere**
[Lat/Long: 44.795232,-106.957626]

Arrived on site at 9:30. Northern Underground was on site as well as Weston, mechanical, Highland Incorporated, and Stonemill construction. Highland was working on placing the lime stone rock mulch around all of the plantings in the northern area of the site. There were no issues with their process for replacing the rock. They had a stockpile of rock in the parking lot and were transporting rock from the pile into wheelbarrels and wheeling it up the sidewalk.

Weston mechanical was placing foam board under the seating area proposed concrete pour, and some of the sidewalk where Stonemill had ended earlier pour. Weston was placing a single layer of foam board and taping down the joints. They had stopped placing foam board shortly after I arrived on site due to the high wind.

Stonemill was on site placing forms for some concrete sidewalk on the job. They were also discussing the concrete to be poured under the pergola and around wall number five. The concern was due to the fact that wall number five is a About 3/4 of a circle the Stonemill foreman was discussing means and methods as to how to pour the concrete, place, and joint. I told them that the maximum panel would be about 7 1/2 feet given the standard rule of using one and a half times the thickness of the concrete. The Stonemill Foreman said that they would shoot for 6 foot wide max and then some instances seven if it made sense but would try to stay well under the 7 foot panel sizing.

There were no issues with the work that I witnessed on site.





Tre LaBossiere: *Tre LaBossiere*

Daily Report

Thursday, Aug 29, 2024

Sheridan County Brooks Street Greenspace

224 South Main Street
Sheridan, WY 82801
Job# : 6017.002.00

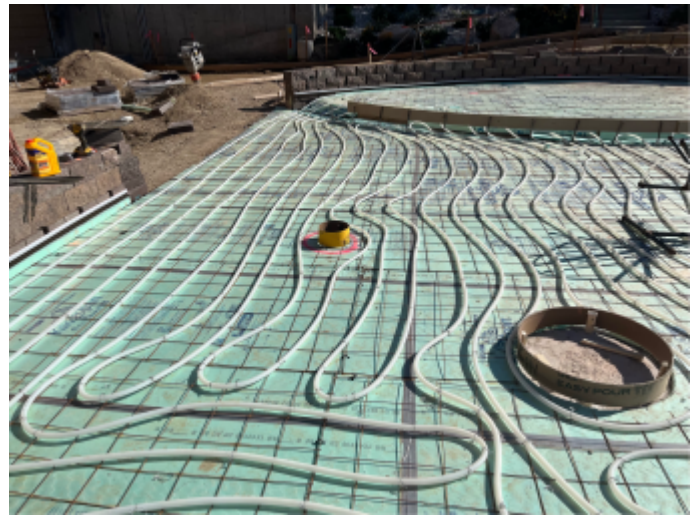
RETAINING WALL CONSTRUCTION

04:25 PM **Tre LaBossiere**
[Lat/Long: 44.795066,-106.957269]

Arrived on site at 4:00. Clinton asked me to meet Westin on site to discuss the heat tubing and the lack of coverage over heat zone 3. Westin was not on site but I was able to get plenty of pictures to send to out mechanical engineer to help with the issue.

Highland Inc. was on site and spread topsoil around wall numbers two and four and the surrounding areas. The irrigation piping is stubbed out ready for planting. Highland will plant on Tuesday following a meeting with Nathan Steiner to confirm planting locations.

NU was able to lay out the picnic table sonotubes in the proposed locations that were discussed earlier today. NU had a mock size of the picnic tables that were cut out of card board. We laid it out in each location to verify spacing compared to the walls and the pergola supports.



MECHANICAL IMPROVEMENTS

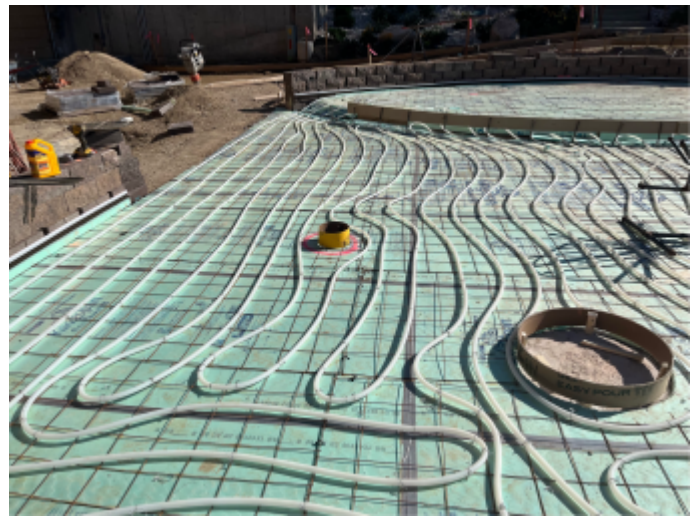
04:25 PM **Tre LaBossiere**

[Lat/Long: 44.795066,-106.957269]

Arrived on site at 4:00. Clinton asked me to meet Westin on site to discuss the heat tubing and the lack of coverage over heat zone 3. Westin was not on site but I was able to get plenty of pictures to send to our mechanical engineer to help with the issue.

Highland Inc. was on site and spread topsoil around wall numbers two and four and the surrounding areas. The irrigation piping is stubbed out ready for planting. Highland will plant on Tuesday following a meeting with Nathan Steiner to confirm planting locations.

NU was able to lay out the picnic table sonotubes in the proposed locations that were discussed earlier today. NU had a mock size of the picnic tables that were cut out of card board. We laid it out in each location to verify spacing compared to the walls and the pergola supports.



LANDSCAPE IMPROVEMENTS

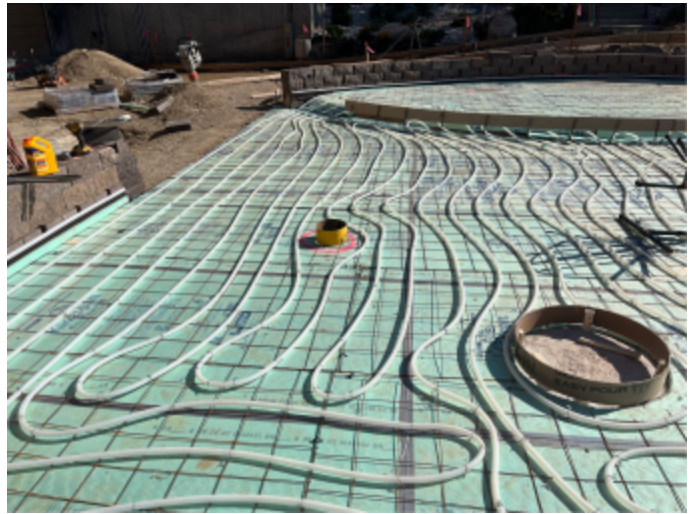
04:25 PM **Tre LaBossiere**

[Lat/Long: 44.795066,-106.957269]

Arrived on site at 4:00. Clinton asked me to meet Westin on site to discuss the heat tubing and the lack of coverage over heat zone 3. Westin was not on site but I was able to get plenty of pictures to send to our mechanical engineer to help with the issue.

Highland Inc. was on site and spread topsoil around wall numbers two and four and the surrounding areas. The irrigation piping is stubbed out ready for planting. Highland will plant on Tuesday following a meeting with Nathan Steiner to confirm planting locations.

NU was able to lay out the picnic table sonotubes in the proposed locations that were discussed earlier today. NU had a mock size of the picnic tables that were cut out of card board. We laid it out in each location to verify spacing compared to the walls and the pergola supports.



Tre LaBossiere: *Tre LaBossiere*