

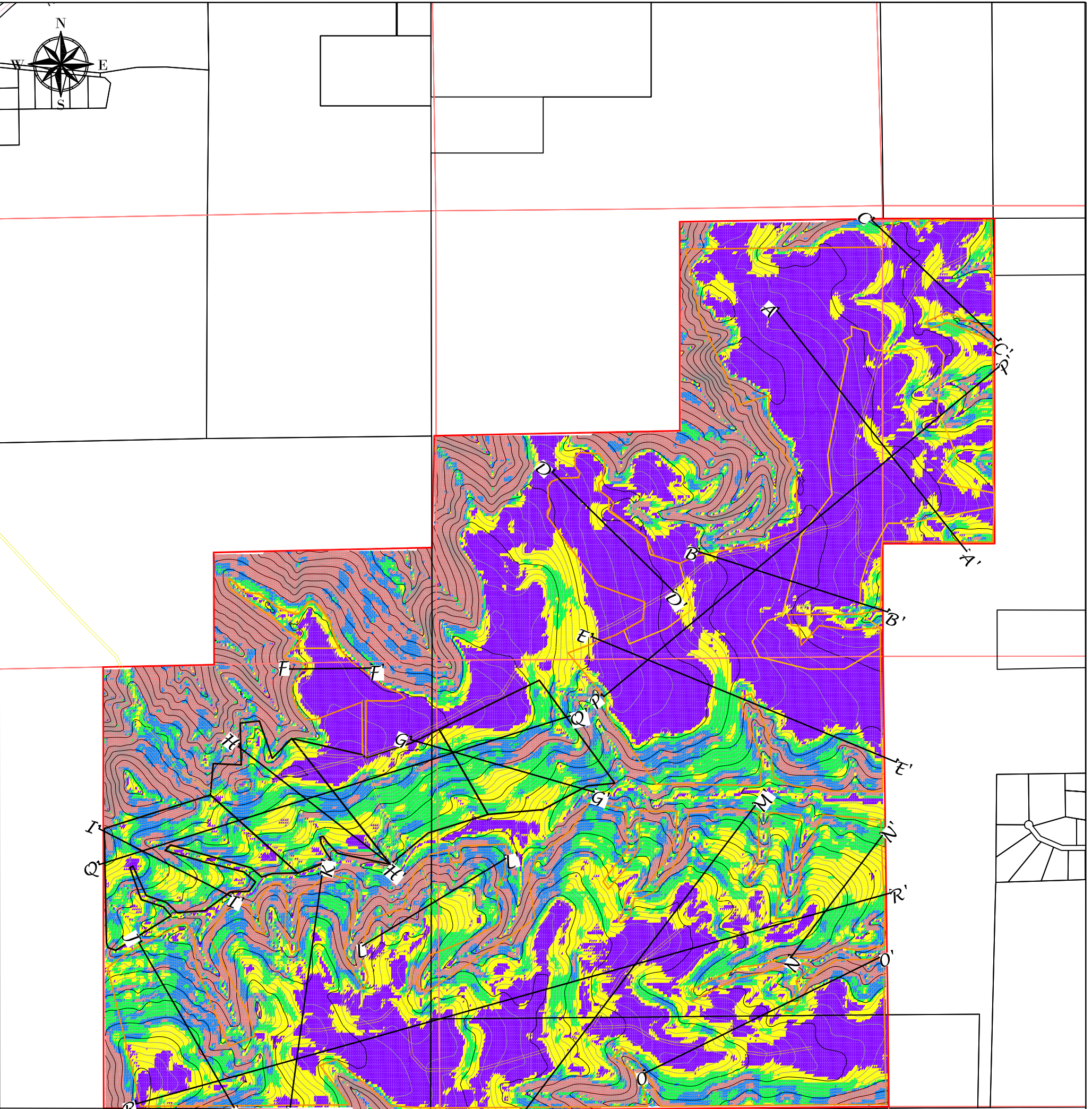
II. APPENDIX D - DESCRIPTION OF THE LAND

E. Appendix D-5 - Topography, Geology, and Overburden Assessment

Based on previous test pit excavations, visual observation, and the survey conducted by Grouse Mountain the topsoil varies on average around 6 inches and the overburden ranges from nonexistent up to approximately 4-6 feet. The gravel seam depth fluctuates between 5-7 feet deep.

More details regarding the stratigraphy and structure can be found in Appendix D-7.

A topographical map is included depicting pre-mining slope conditions and the referenced cross sections.



Slopes Table				
Number	Minimum Slope	Maximum Slope	Area (Acres)	Color
1	0.00%	5.00%	603.51	<div></div>
2	5.00%	10.00%	350.39	<div></div>
3	10.00%	15.00%	261.46	<div></div>
4	15.00%	20.00%	193.27	<div></div>
5	20.00%	175.00%	349.11	<div></div>

- LEGEND**
- Gravel Pit Boundaries
 - Affected Area
 - Parcels
 - Sections
 - Big Goose Road
 - Road Way
 - Cross Sections

Notes:

Forbes Pit
Appendix D-5
Slope Measurements

MULLINAX
SAND & GRAVEL

(307)674-4466 P.O. Box 2044 Sheridan, Wyoming 82801

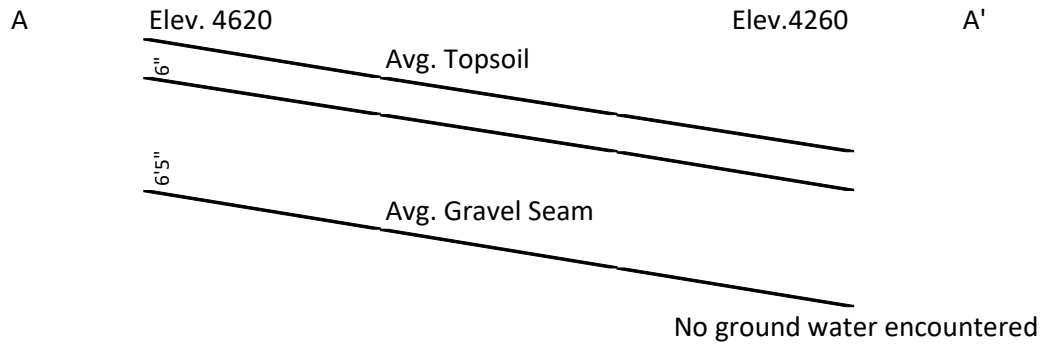
0 600 1200 Feet

Scale: 1"=1200'

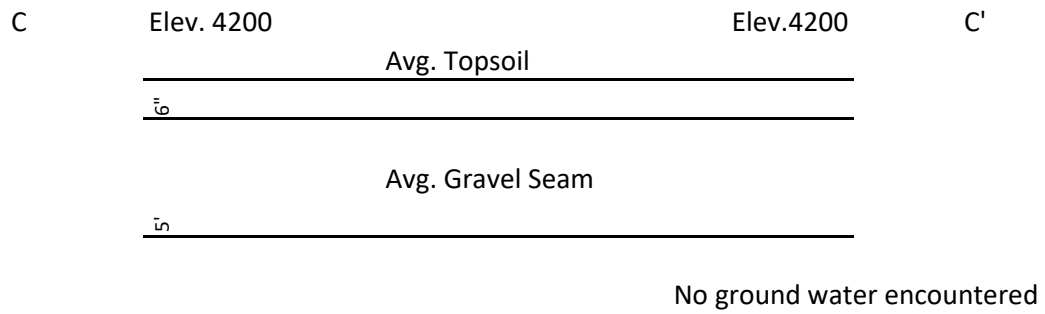
Date: Jan 4th, 2024

Cross Sections

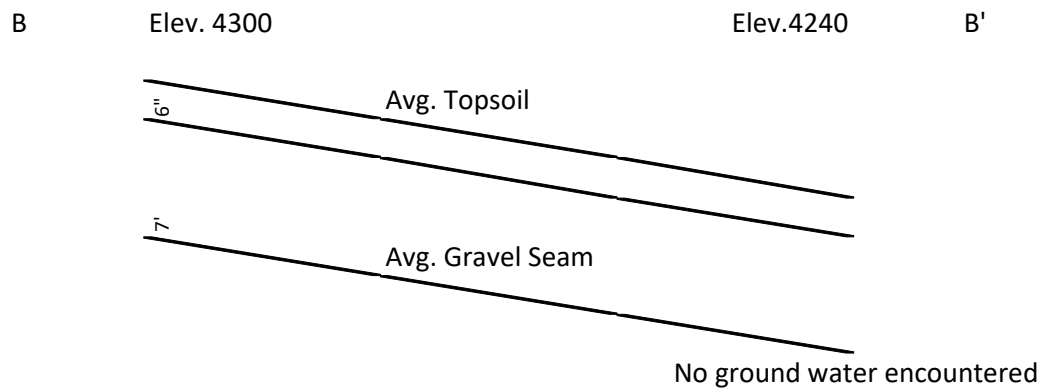
A-A'



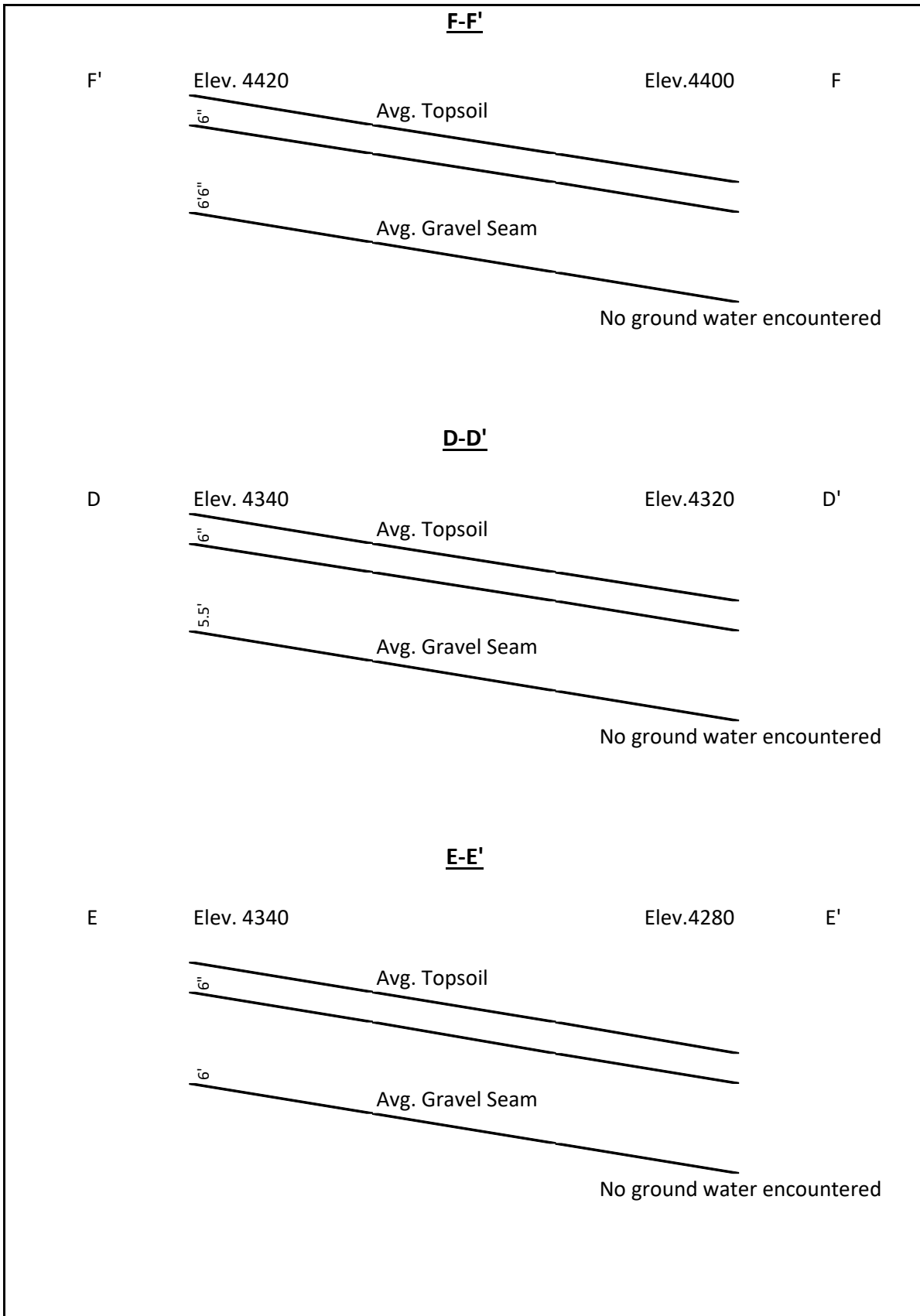
C-C'



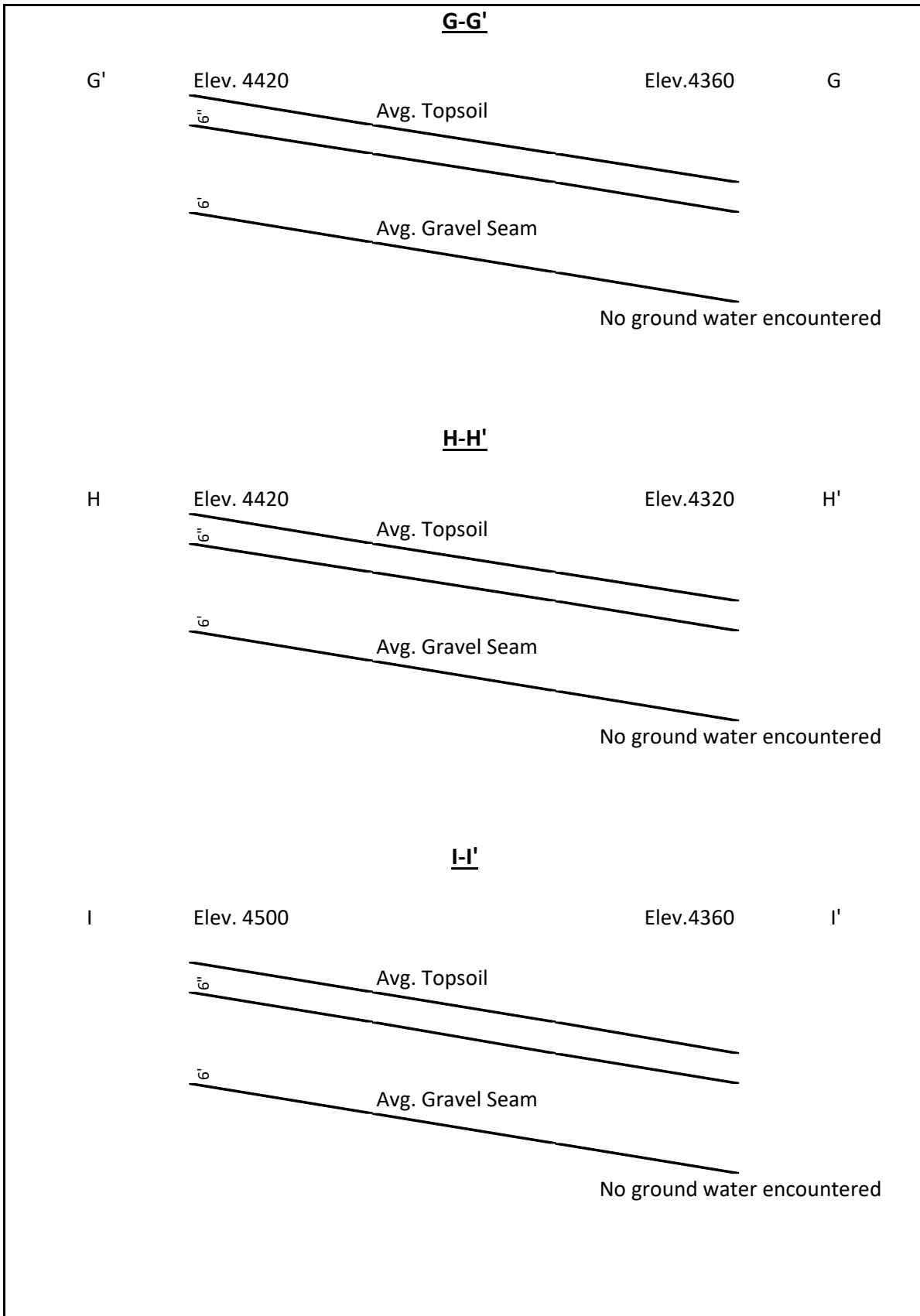
B-B'



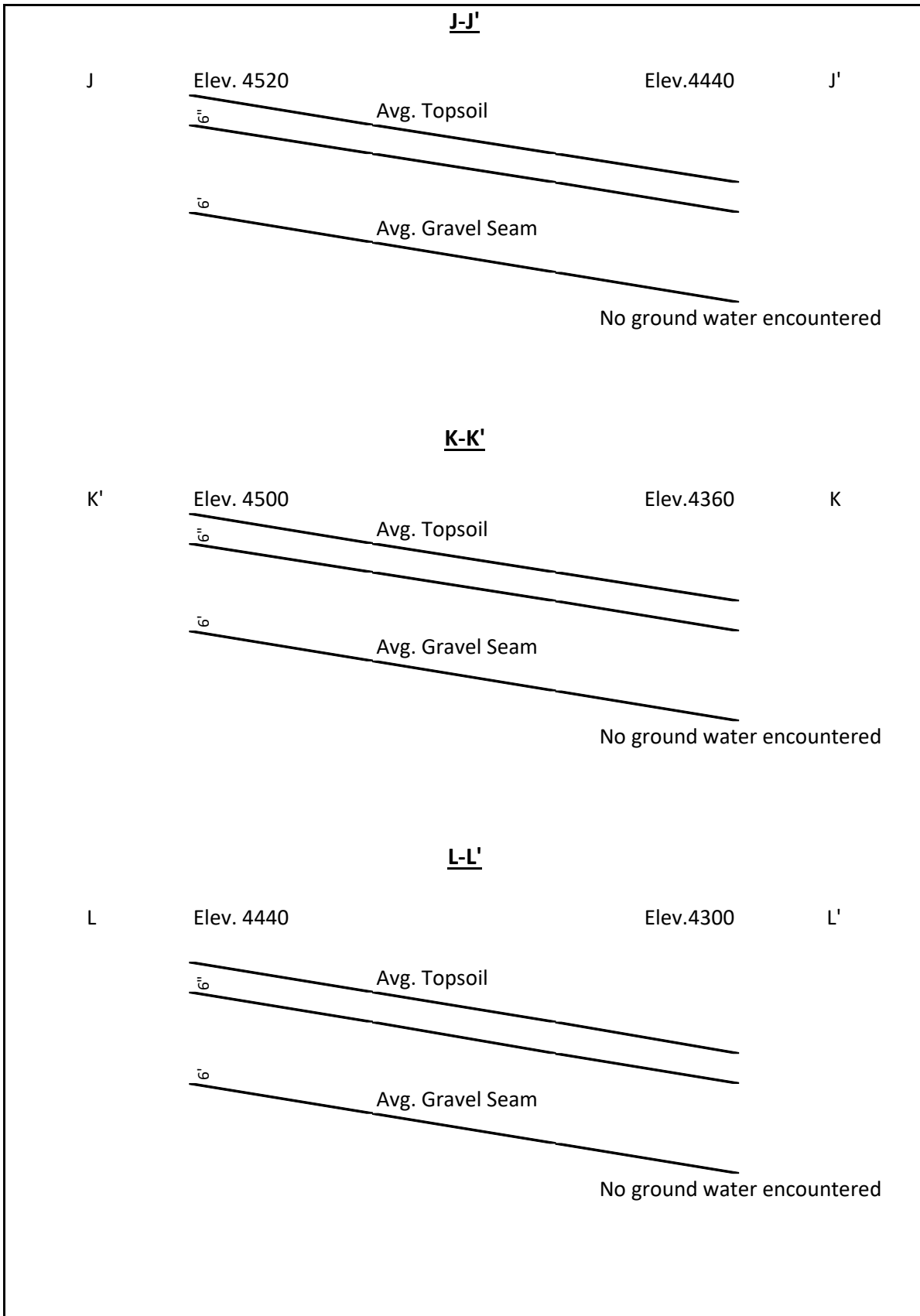
Cross Sections



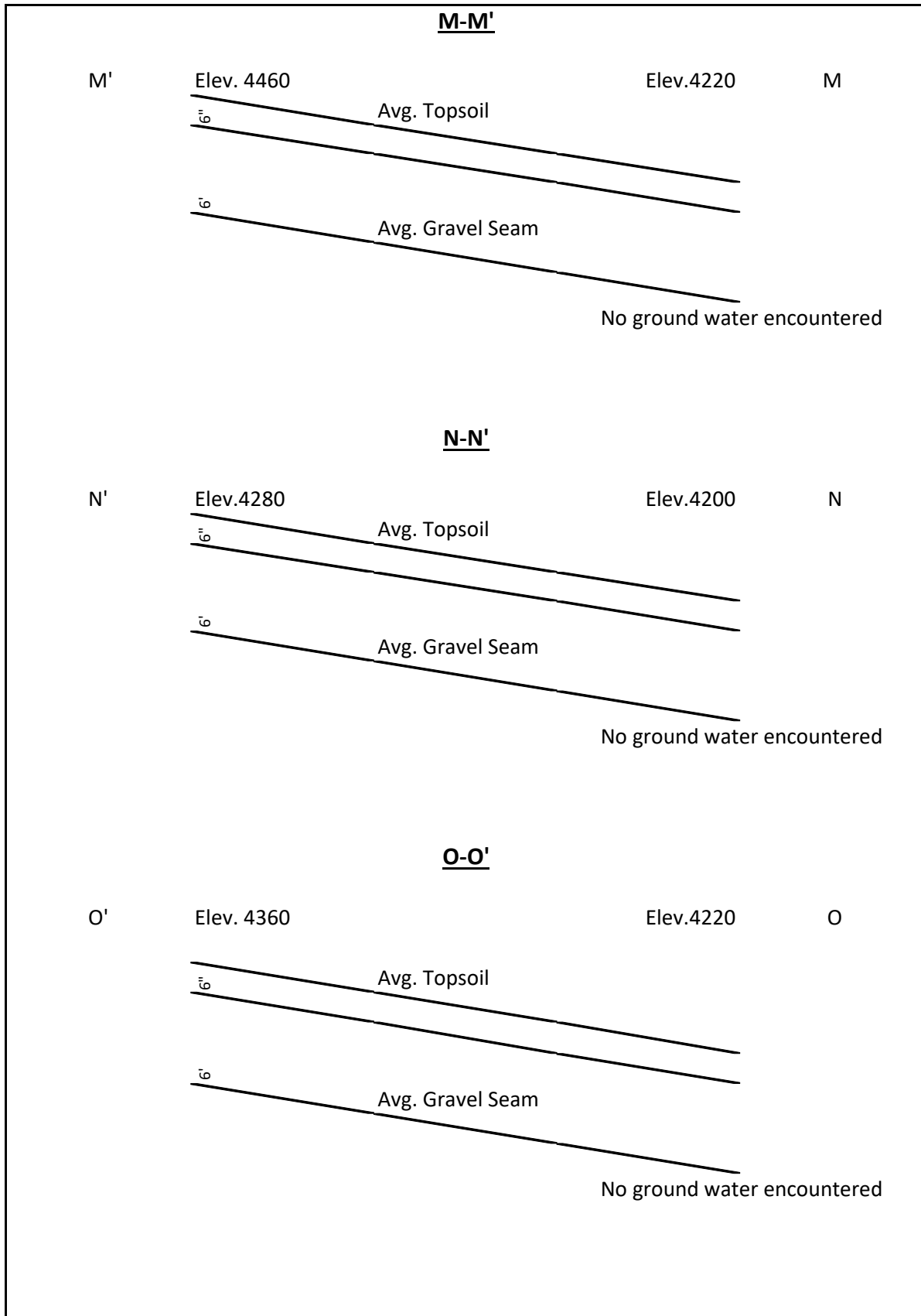
Cross Sections



Cross Sections



Cross Sections



Cross Sections

